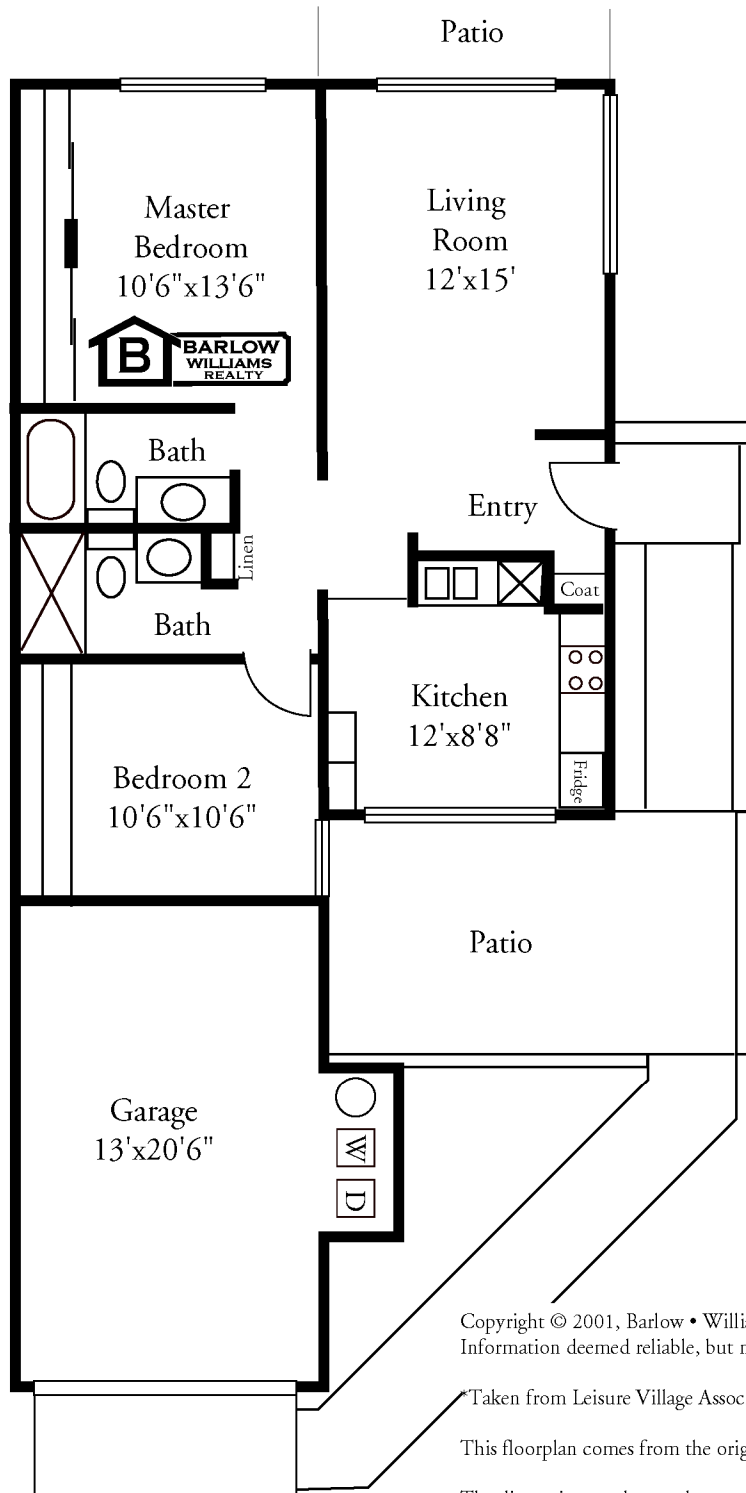


The *Newport Exterior*
Leisure Village Camarillo, CA



938 square feet*

Copyright © 2001, Barlow • Williams Realty - All Rights Reserved.
 Information deemed reliable, but not guaranteed.

*Taken from Leisure Village Association Fee Schedule

This floorplan comes from the original plans. Individual units may differ.

The dimensions and areas shown are not guaranteed to be accurate or drawn to scale by the owner or the broker. Anyone wanting exact measurements should hire an engineer to measure the property.

For More Information Call:

(805) 987-5755 (800) 382-2228

5257 Mission Oaks Blvd. • Camarillo, CA 93012 • www.barlowandwilliams.com

